

天人合一



DESIGN WITH NATURE IS NOT A STYLE, IT IS OUR ATTITUDE

PHILOSOPHY



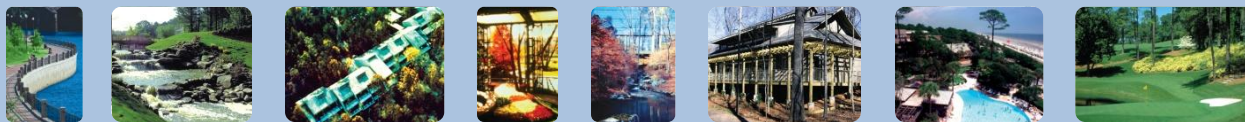
PLANNING



URBAN DESIGN



LANDSCAPE ARCHITECTURE

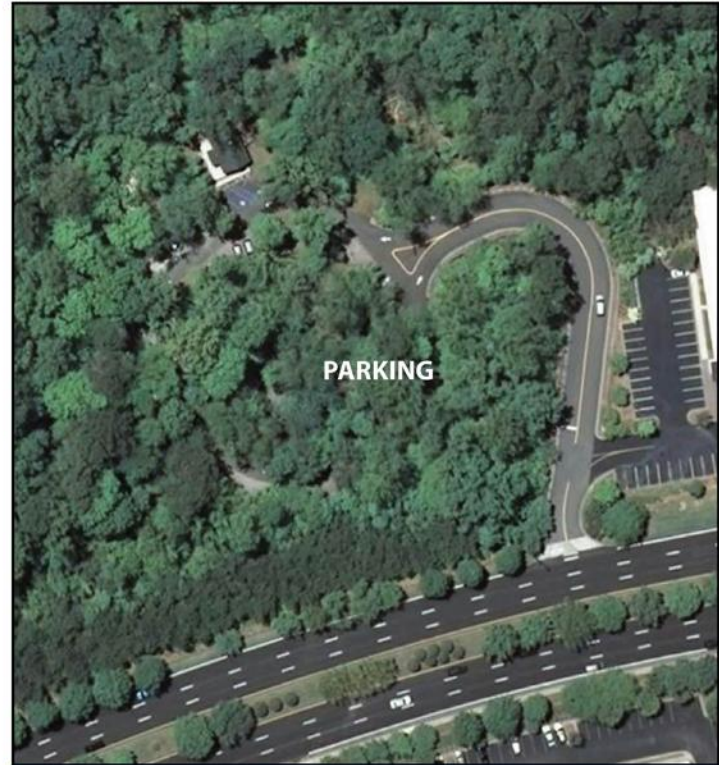




PHILOSOPHY



**Conventional Approach :
Clear Cut & Mass Grading**



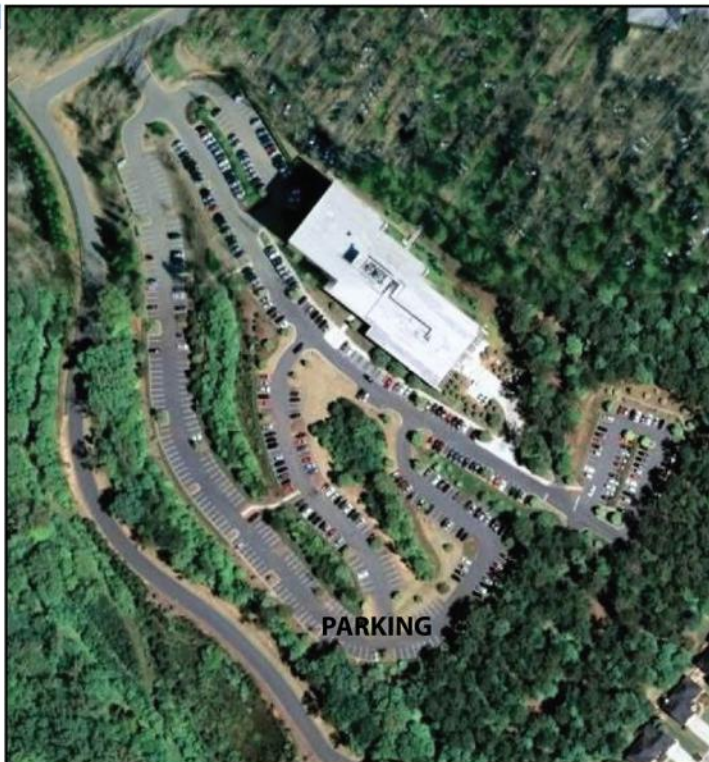
**Our Approach :
Selective Clear & Fitting the Land**



**Conventional Approach :
Clear Cut & Mass Grading**



**Our Approach :
Selective Clear & Fitting the Topography**



**Conventional Approach :
Clear Cut for Parking Lot**



**Our Approach :
Weaving Cars Under the Trees**



PLANNING



ARC Quality Growth Tool Kit

Atlanta, Georgia

- A series of Quality Growth Tool Kits are designed to serve the needs of local governments, planners, developers, and involved citizens
- Provided innovative development approaches that maintain quality of life while minimally impact the environment
- Offer practical guidance for specific practices, enabling governments to facilitate land use patterns that conserve natural resources, use public infrastructure more efficiently, and improve transportation mobility, thereby improving energy efficiency, reducing resource consumption, and achieving sustainable economic growth



Columbus Comprehensive Plan

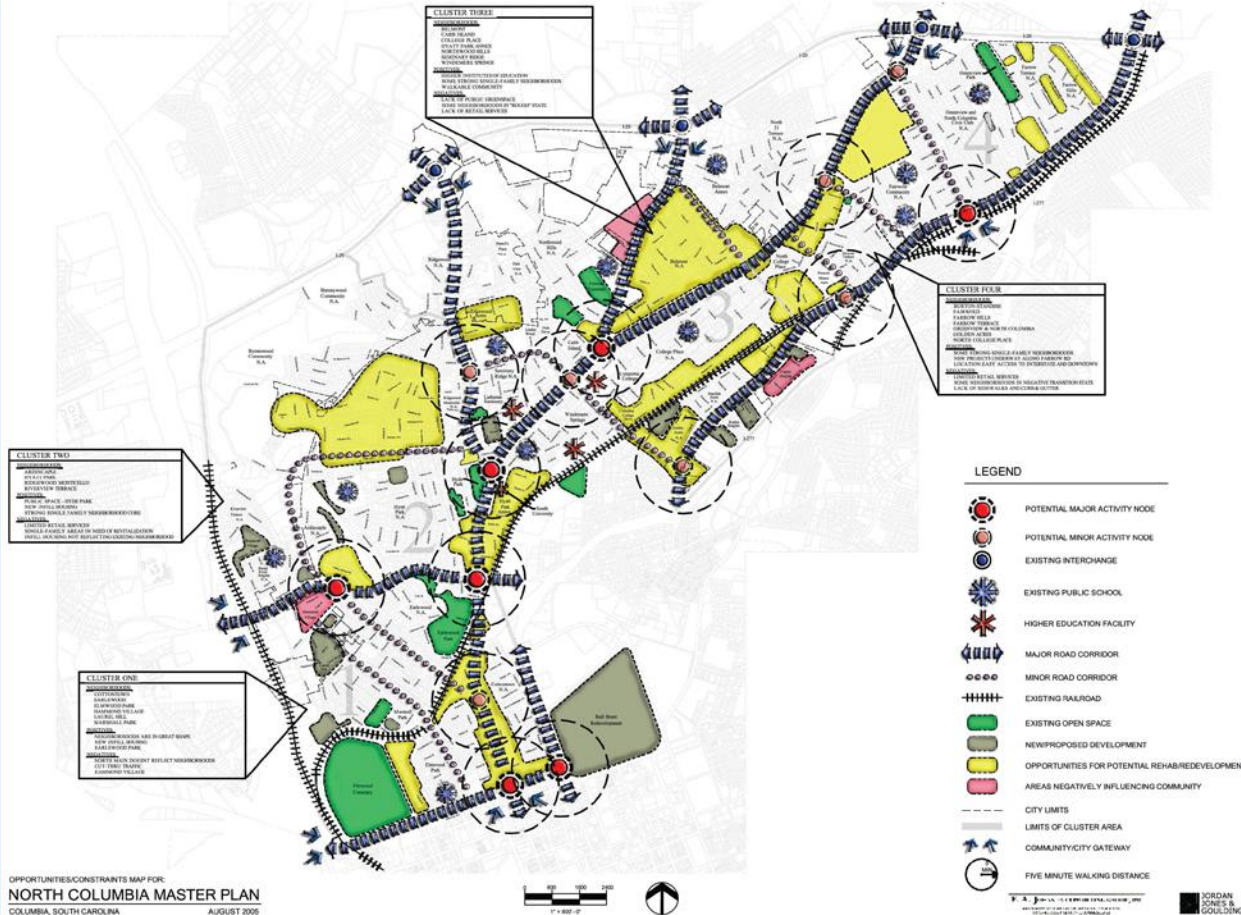
Columbus, GA

- Columbus is the third largest city in the state; the comprehensive plan has united the city's neighborhoods and communities under a revitalization-focused approach
- Emphasized historic preservation, greenspace and multi-use trail expansion, restriction of new development to existing water and sewer service areas
- Intensive public engagement process with the extensive inclusion of local media partners, community organizations, and City leaders and incorporated a project website, visioning survey, and public meetings

North Columbia Master Plan

Columbia, SC

- Stakeholder based master plan
- Established a new development pattern based on New Urban principles of interconnected open space and pedestrian orientation



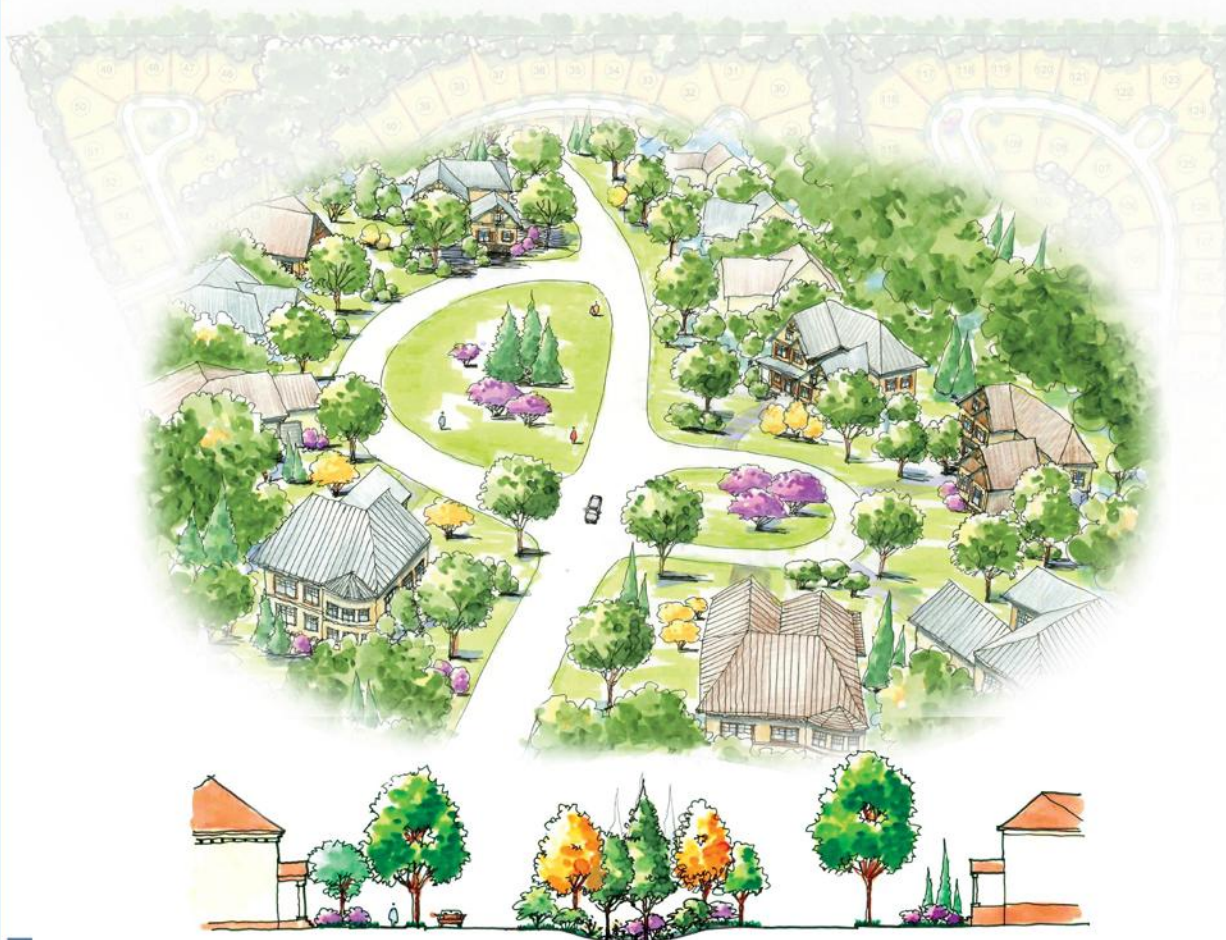


Hwy 434 Mixed-Use Development

St. Tammany Parish, LA

- New urbanist community with a 110-acre town center
- New campus for three local colleges
- Over 329 acres of permanently preserved open space out of the 888 acres of the community
- All wetlands have been preserved on the site; old logging roads have been re-used in order to minimize the impact on the region's fragile wetlands





Blackmon Road Conservation Subdivision

Columbus, GA

- Balanced residential development with open space and natural resources while trying to retain a sense of place
- Established an open space network within the context of a comprehensive plan
- Provided home owners easy access to open space for the views and for a range of outdoor activities



Fairway West Village

St. Tammany, LA

- Traditional neighborhood development (TND) that includes a variety of housing types and land uses
- Mixed use facilities located within walking distance of private homes
- The community is served by a network of paths, streets and lanes suitable for pedestrians as well as vehicles. This provides residents the option of walking, biking or driving to places within their neighborhood



Crane Creek Strategic Plan

Richland County, SC

- Natural resource based master plan to guide redevelopment
- Mixed use to diversify the land use
- Preserved natural creek with interconnected trail system
- Create sense of place through creating community identity





Home Place

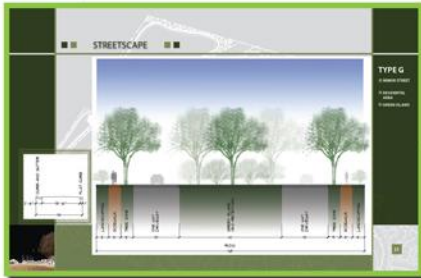
Prattville, AL

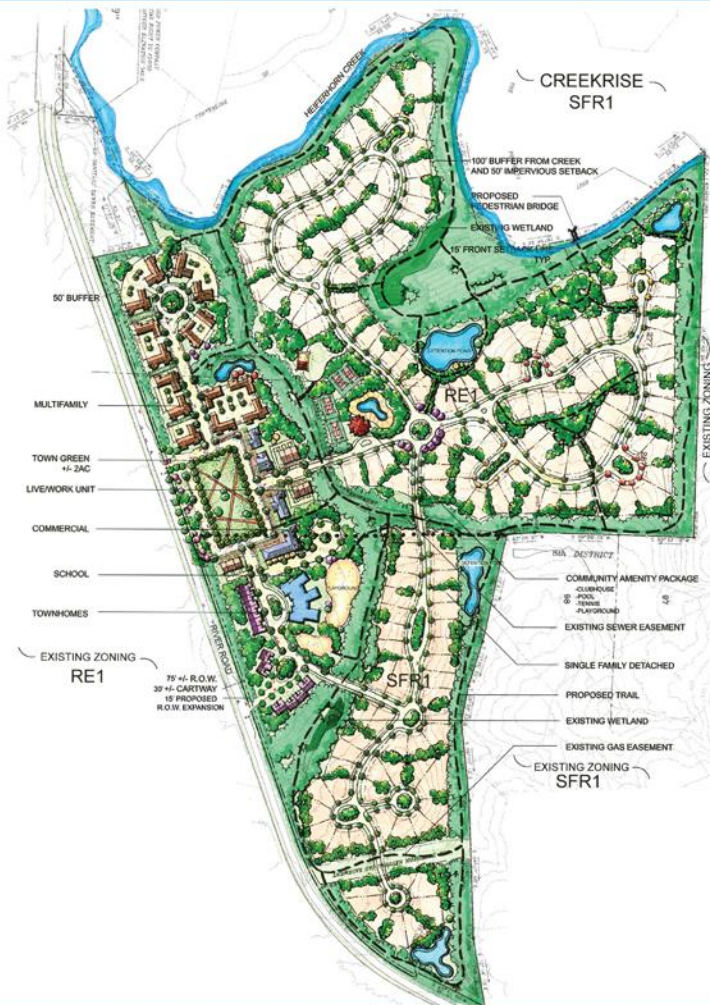
- 2007 Aurora Award
- Every house is either on the park, on a greenway, or within a five-minute walk of one
- All of the development areas of the site are connected by an extensive open space system
- The greenway system is also a part of the stormwater system which allows the transfer, storage, and cleaning of the site's runoff
- Developed design guidelines for buildings, hardscapes, site planning, and landscape to ensure the quality of future development

Craven 30 Mixed-Use Development

New Bern, NC

- Mixed use community with live, work and play elements
- Increased housing options for diverse household types
- Reduced auto dependence and increased travel options
- Created a town center to enhance the sense of place





River Road Village

Columbus, GA

- The first new community planned under Columbus/Muscogee County's planned mixed-use ordinances
- A town center with a ± 2 acre public green as the heart of the town
- Protects and enhances existing creeks and drainage ways
- An inter-connected greenway system with elements for public trails and stormwater control and management system



URBAN DESIGN



Holland New Town Plaza
Shanghai, China

Duluth Town Green

Duluth, GA

- Creation of a people and event space to re-energize the town center
- Catalyst for 70 million dollars of new downtown development





Ray Charles Plaza

Albany, GA

- Renovation of an existing lawn area into a destination greenspace and cultural facility
- Created pedestrian facilities and connections to Flint Riverwalk
- Created a sculptural focal point based on musical motifs
Integrated water feature, sound program system, LED lighting patterns and sculpture for an interactive experience
- Implemented native Longleaf Pine plantings and native grass to reflect regional characteristics

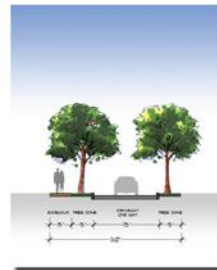
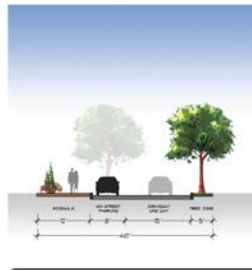
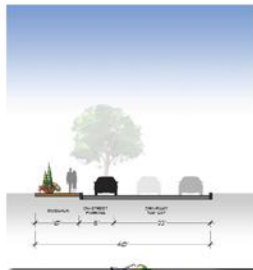
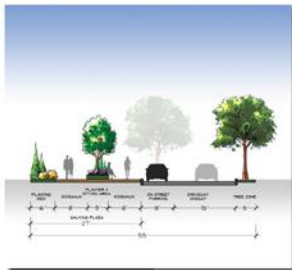


Sandy Springs Historic Site

Sandy Springs, GA

- Created an event lawn and amphitheater for small concerts and events
- Removed asphalt parking and replace it with pervious pavers and garden spaces
- Created an ADA accessible route from the gardens to the event lawn
- Turf was established on 4" gravel base, which allowed the water to recharge into the soil rather than run off

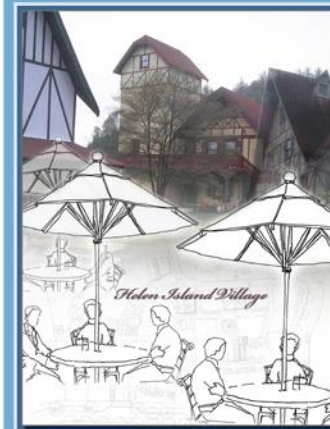




Helen Island Village

City of Helen, GA

- Improved traffic flow
- Public open space
- Pedestrian plaza
- Green parking
- Preserved existing buildings





LANDSCAPE ARCHITECTURE



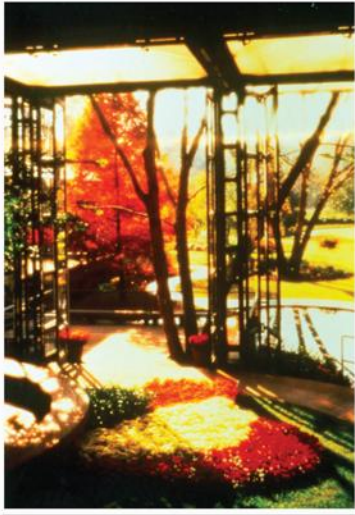
PARKING UNDER TREES

Simmons Office Park

Atlanta, GA

- Building was carefully designed to not impact the natural drainage system of the site
- Building was also designed to fit the sun angles and avoid hot summer sun, but allow warm winter sun to enter



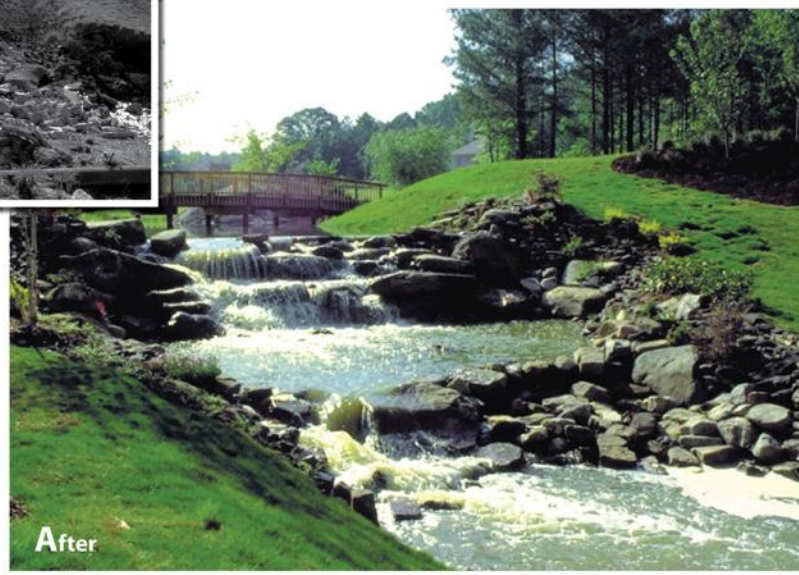


Callaway Discovery Center

Pine Mountain, GA

- Parking was designed to minimize removal of trees
- Building was designed to allow light, sun and views into the structure while protecting against hot summer sun
- Blend of indoors and outdoors





Marietta Country Club

Marietta, GA

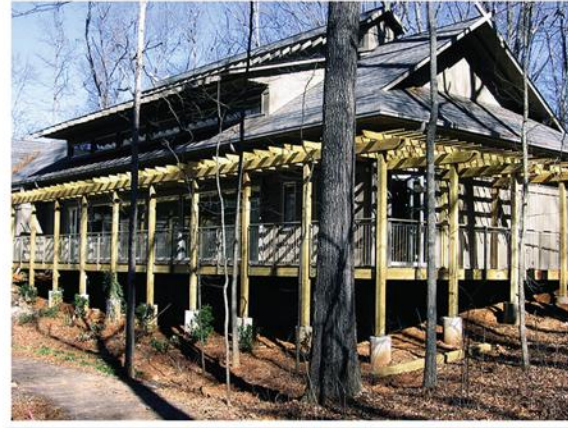
- Severe erosion was damaging the site. Hydraulics engineer designed a weir to control the flow and dissipate the energy
- Landscape Architect utilized native stone to create a natural look stream



Southern Progress Building

Birmingham, AL

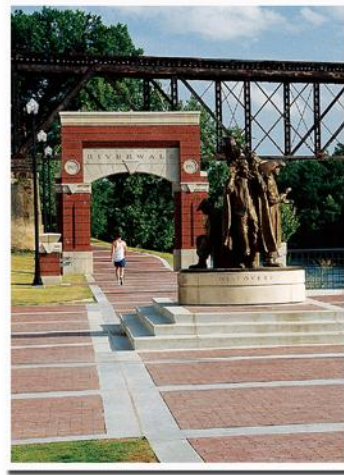
- The site was very uneven with two hills forming a stream between them
- Site engineers wanted to level the site for the building and parking
- Landscape Architect prepared a site plan that set the building across the stream by sitting on the two hills. The stream continues to pass undisturbed under the building. The plan preserved the natural integrity of the site



Sawnee Mountain Preserve Visitor's Center

Cumming, GA

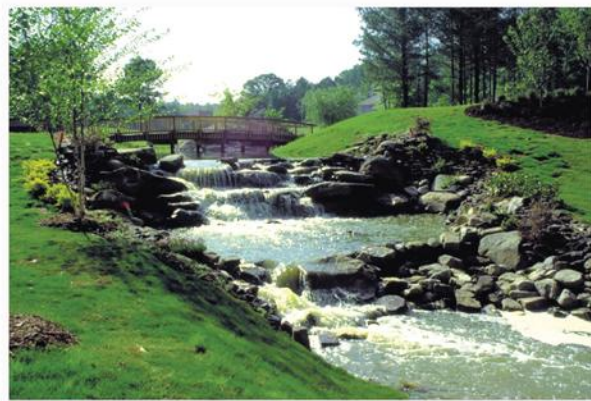
- Native plants
- Permeable paving
- Provided a wooded detention area through use of detention walls, rather than detention ponds in sensitive areas
- Cisterns collect rainwater from roof
- Large grassed swales in parking lot reduce impervious areas



Columbus Riverwalk

Columbus, GA

- The city developed a trunk sewer line along the bank of the Chattahoochee river creating an eyesore and environmental wound
- The design team developed a river walk along the bank to stabilize the river edge and allow citizens closer access to the water



Golf Landscape Architecture

- Traditional landscape design solutions are inadequate to accommodate the scale of a golf course. The approach requires a design vision that embraces the long vistas of the fairways and spaces. Design solutions must create an impact at long distances rather than up close. Therefore large masses of the same plant are use similar to using a large paint brush of color across a massive green canvas.
- Maintenance is always an issue so the best solutions use the native flora and place them where they can grow to their maximum size with little to no maintenance.
- The best places for effective landscape that does not interfere with play is around the tees, outside the rough edges and behind the greens. All for long distance and up close effect.



Resorts

- Resort planning and design has to take into account the demands and expectations of the patrons and protection of the natural and environmental characteristics of the setting. People choose resort locations to enjoy the unique environments where resorts are located. Therefore, site sensitive design is an absolute for a successful resort. We embrace the design philosophy of "Land Sensitive Design".

- Our team has been the master planner and site designer for a number of resorts throughout the US southeastern coast, Mexico and the Caribbean. Clients for which we have worked include Marriott, Hilton, and Ritz Carlton Hotels and timeshare resorts. We have also designed resort communities on Hilton Head, Barbados, and Curacao.